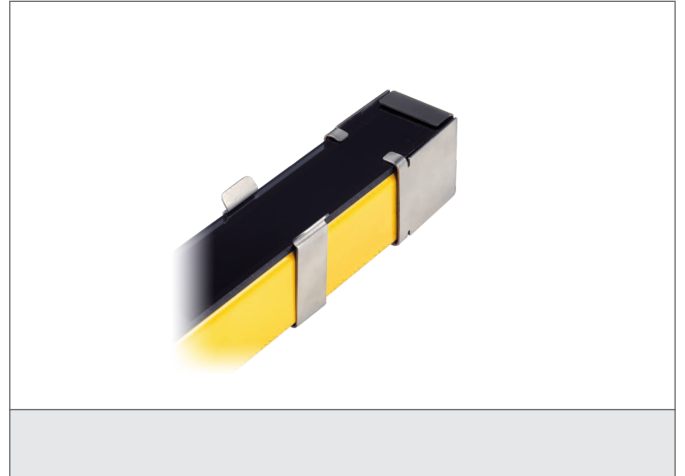


PSE 1800

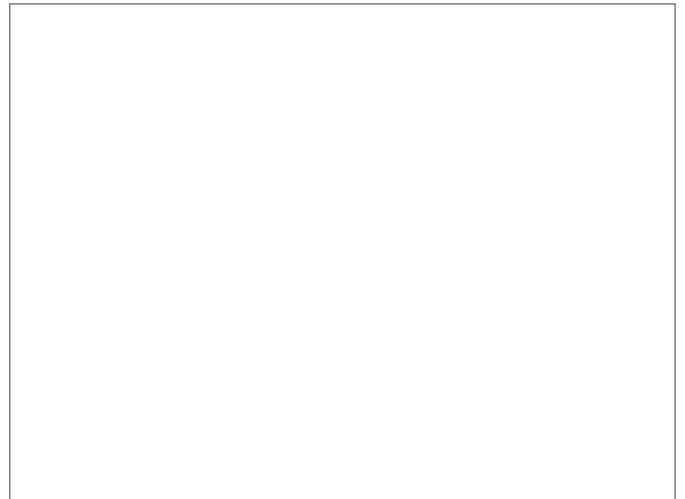
Protective screen kit

- Protection of welding sparks, scratches and aggressive medias in working space
- Quick and easy fix and mounting
- Robust design



Safety instructions

All the installation, connection and safety regulations, as per our technical information, have to be strictly adhered to. The set-up of the products have to be made by skilled staff, only. Repair exclusively made by di-soric.



| TECHNICAL INFORMATION (typ.) | |
|------------------------------|---|
| Operating principle | Protective screen |
| For | 1.810 mm protective field height |
| Material | Polycarbonate (protective glass) |
| Scope of delivery | 4 protective screens, (stainless steel clamps / -caps to be ordered separately) |
| | |
| | |
| | |
| | |
| | |
| | |
| | |
| | |
| | |
| | |
| | |
| | |
| | |
| | |